

ORDINANCE #15 - 19

AN ORDINANCE AMENDING DAGGETT COUNTY'S  
DUTCH JOHN ZONING MAP;  
REZONING DESCRIBED PROPERTY ALONG HWY 191 AND LITTLE HOLE  
ROAD FROM MULTIPLE USE (MU-40) TO COMMERCIAL (C)

**WHEREAS**, Daggett County Redevelopment Agency has filed an application to rezone a six hundred foot (600') corridor along a portion of Hwy 191 and also along a portion of Little Hole Road in T2N R22E S2 in Dutch John from Multiple Use (MU-40) to Commercial (C); and

**WHEREAS**, after giving notice and conducting a public hearing on January 21, 2015, the Daggett County Planning Commission has recommended approval of the rezone as requested for the subject parcel; and,

**WHEREAS**, after giving notice and conducting a public hearing on April 7, 2015, the Daggett County Commissioners have accepted the Planning Commission recommendation and adopted findings to approve the rezone request.

**BE IT HEREBY ORDAINED BY THE BOARD OF COUNTY COMMISSIONERS that:**

The following described property is hereby rezoned on the official Dutch John Zoning map as indicated below:

A six hundred foot (600') corridor starting at the center line of the Highway, along portions of Highway 191 and Little Hole Road in T2N R22E S2 in Dutch John as illustrated in bright yellow on the map on Exhibit A, attached hereto and incorporated herein by reference.

**SECTION 2. Severability.**

If any court of competent jurisdiction declares any Section of this Ordinance invalid, such decision shall be deemed to apply to that Section only, and shall not affect the validity of the Ordinance as a whole or any part thereof other than the part declared invalid.

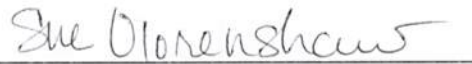
Daggett County Zoning Ordinance Map Amendment  
Page (2)

**SECTION 3. Effective Date.**

This Ordinance shall become effective fifteen (15) days after publication.

DATED this 16<sup>th</sup> day of June, 2015.

ATTEST:



Sue Olorenshaw  
County Clerk/Treasurer



DAGGETT COUNTY  
BOARD OF COMMISSIONERS



Karen Perry, Chairwoman



Clyde Slaugh, Commissioner



Jack Lytle, Commissioner

# Daggett County ~Dutch John Zoning~



This map is to represent the data and is not intended for legal purposes.

**Legend**

- D/Approved mo
- Daggett Boundary
- Zones**
  - 600' Corridor
  - BOUNDARY
  - Commercial
  - Light Industrial
  - MU40
  - Mobile Home
  - RPZ
  - Single Family Residential
  - Multi-Family Residential
  - Sections

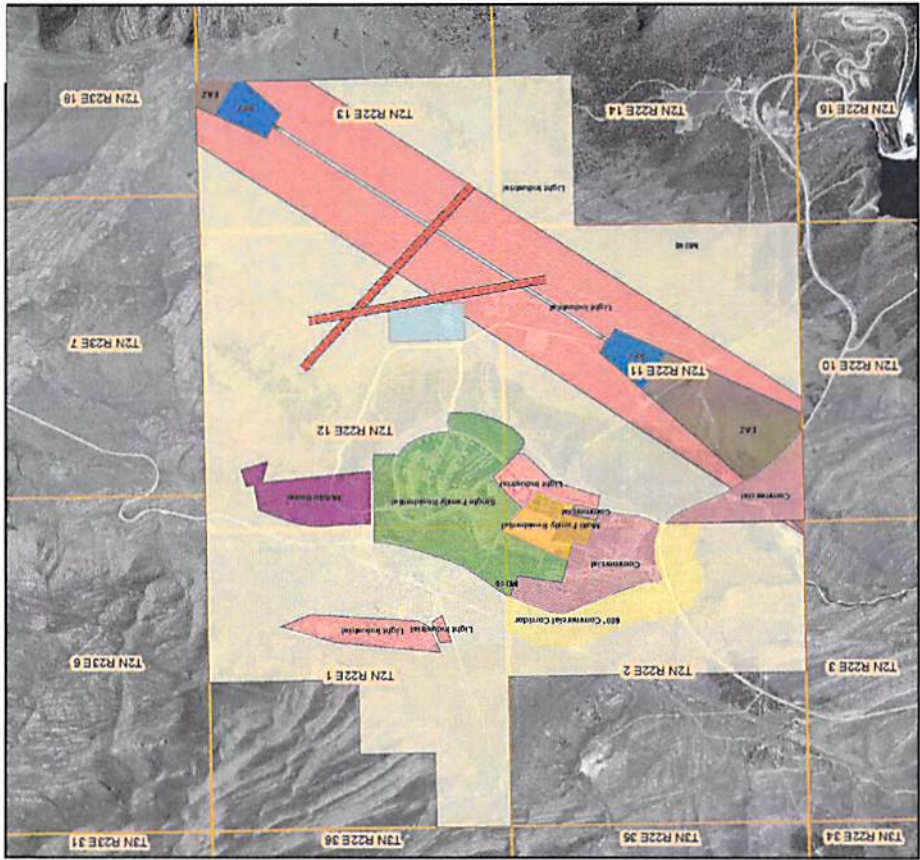


EXHIBIT A